



WORD CHECK CHALLENGE COMPETITION

CHAMPIONSHIP RULES & GUIDELINE, UK





Languageleap Solutions is excited to launch the Word Check Challenge Competition Championship in the United Kingdom, London. Calling all young minds between 8 and 14 years old in the UK to register and participate.

Registration:

The Word Check Challenge Competition Registration fee is £50.00 per Participant and valid for the current competition season only, which cannot be transferred to another season.

Here's what this means for you:

- You are all set to participate in the exciting challenges and test your vocabulary skills in the Word Check Challenge Competition.
- Make sure to familiarise yourself with the competition rules and deadlines.
- Remember, your registration is specific to this year's competition. If you'd like to participate again, you'll need to re-register for the following year.
- Keep the learning going on the go and track your progress to Level 8.
- Send your Entered Full Name Activity Summary screenshot of the Word Check Challenge App Level 8 to the email address [-wccc@languageleapsolutions.com](mailto:wccc@languageleapsolutions.com) for verification and assessment.



WORD CHECK CHALLENGE COMPETITION QUARTER FINAL STAGE

Total Assessment Sessions:

- Contestants: 512
- Group Size: 16
- Total Groups: 32
- Assessment Duration per Group: 3 minutes
- WCC Difficulty Level 6: Normal (5 letters)



Number of Assessments per Day:

- Daily Assessments: 32 groups

Daily Assessment Time:

- Assessment Duration: 3 minutes/group
- Number of Groups per Day: 32 groups
- Daily Assessment Time: 180 minutes (3 hours)



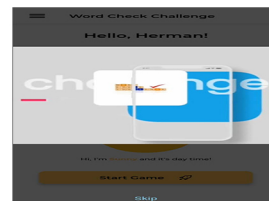
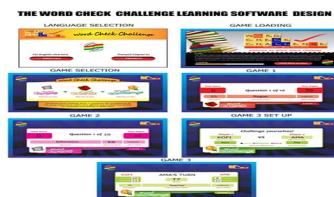
Assessment Process:

Group Management:

- All 512 qualified registered contestants would be divided into smaller groups of 16.
- Each group would be assigned a designated assessment time slot within the available timeframe.
- A pre-defined schedule would be used to manage group allocation and avoid conflicts.

Assessment Software:

- The offline word check challenge application is available on Google and App stores and would be pre-installed on all assessment laptops.
- The word check challenge application is user-friendly for students aged 5 years +.





Assessment Stations:

- Multiple assessments will be done with 8 laptops station setup for the Word Check Challenge Competition Championship.
- Enough space and privacy for each contestant would be ensured to focus on the assessment.



Assessment Flow (Every 3 Minutes):

- | | |
|--|---|
| <ul style="list-style-type: none">• A new group of 16 contestants arrives at an assessment station.• Contestants take their assigned positions by the laptops.• A facilitator provides a brief introduction and clarifies any doubts regarding the application or assessment format.• The facilitator initiates the assessment on all laptops simultaneously. | <ul style="list-style-type: none">• Contestants complete the word check challenge within the allotted 3 minutes.• The application automatically scores each contestant's performance upon completion.• Contestants are directed to leave the station after completing the assessment.• The facilitator prepares the station for the next group by clearing any contestant data or resetting the application. |
|--|---|

Technology Considerations:

Application Features:

- *The offline application can verify and handle simultaneous assessments on multiple laptops within a station.*
- *The application automatically stores or transmits contestant scores securely for later analysis.*



Technical Backup:

- Spare laptops and technicians are on standby in case of technical malfunctions.

Data Management:

- There is a system to collect and store assessment data from each laptop manually and accurately.

Additional Considerations:

Standardized Environment:

- Internet connection is not required, as the application is offline.
- A similar lighting and noise level is maintained across all assessment stations for fairness.

Practice Runs:

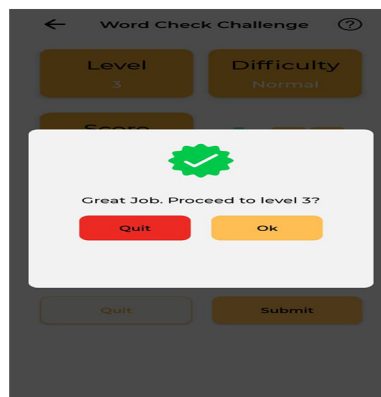
- Practice assessment sessions with a small group will be conducted at the beginning to identify and address any potential issues with the application, laptops, or overall.

Communication:

- The assessment schedule and expectations would be clearly communicated to all schools and participants.

Threshold Determination:

- The minimum score (threshold) contestants need to achieve to proceed to the semi-final stage would be defined through the highest score.
- Factors like test difficulty and desired competition level would be a general consideration for all contestants.





Outcome Analysis:

- The collected assessment data to determine the number of contestants who crossed the threshold and qualified for the next stage would be thoroughly analysed.
- Reports showing individual contestants scores and overall performance trends would be prepared after each assessment.
- Contestants with the highest percentage score would proceed to the next stage of the Word Check Challenge Competition Championship.

WORD CHECK CHALLENGE COMPETITION SEMI-FINAL STAGE

Total Assessment Sessions:

- Contestants: 112
- Group Size: 16
- Total Groups: 7
- Assessment Duration per Group: 5 minutes
- WCC Difficulty Level: Advanced (6 letters)



Number of Assessments per Day:

- Daily Assessments: 7 groups

Daily Assessment Time:

- Assessment Duration: 5 minutes/group
- Number of Groups per Day: 7 groups
- Daily Assessment Time: 180 minutes (3 hours)



For the Eliminated Semi-Finalists

A prize package including souvenirs and an official certificate of participation





WORD CHECK CHALLENGE COMPETITION CHAMPIONSHIP FINAL STAGE

PART 1

Total Assessment Sessions:

- Contestants: 32
- Group Size: 16
- Total Groups: 2
- Assessment Duration per Group: 5 minutes
- WCC Difficulty Level: Normal (8 letters)



PART 2

Total Assessment Sessions:

- Contestants: 16
- Group Size: 16
- Total Groups: 1
- Assessment Duration per Group: 5 minutes
- WCC Difficulty Level: Advanced (7 letters)



PART 3

Total Assessment Sessions:

- Contestants: 8
- Group Size: 8
- Total Groups: 1
- Assessment Duration per Group: 5 minutes
- WCC Difficulty Level: Advanced (8 letters)

For Part 1,2 & 3 Eliminated Finalists

A prize package including souvenirs and an official certificate of participation.





PART 4

Total Assessment Sessions:

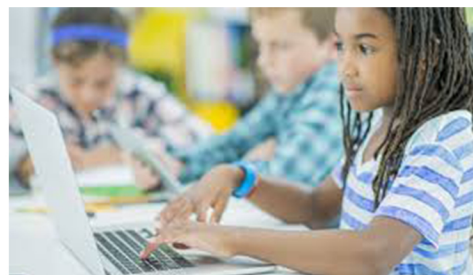
- Contestants: 4
- Group Size: 4
- Total Groups: 1
- Assessment Duration per Group: 5 minutes
- WCC Difficulty Level: Advanced (9 letters)



PART 5

Total Assessment Sessions:

- Contestants: 2
- Group Size: 2
- Total Groups: 1
- Assessment Duration per Group: 5 minutes
- WCC Difficulty Level: Advanced (10 letters)



For the Part 4 & 5 Finalists

A prize package including souvenirs and an official certificate of participation

- 4th place - £500
- 3rd place - £500
- 2nd place - £1000



For the champion (1st place)

- £2,000 cash prize, a commemorative medal, an official certificate of participation and souvenirs/products.

For the champion's school

- The official championship trophy of the Word Check Challenge Competition and Certificate.



Languageleap Solutions Ltd – Where words lead to success.

