



WORD CHECK CHALLENGE COMPETITION

CHAMPIONSHIP RULES & GUIDELINE, UK





Languageleap Solutions Ltd is thrilled to announce the launch of the Word Check Challenge Competition Championship in London, United Kingdom. We invite all young minds aged 8 to 14 from the UK and beyond to register and take part in this exciting challenge.

Registration:

The initial download with proof of purchase entitles one participant to a one-time FREE registration. Any additional registrations using the same proof of purchase will require a registration fee.

Here's what this means for you:

- You're all set to embark on an exciting journey to test your vocabulary skills in the Word Check Challenge Competition.
- Be sure to review the competition rules and important deadlines.
- Remember, your registration applies only to this year's competition—re-registration is required to participate in future years.
- Keep the learning going and track your progress all the way to Level 8.
- To book a virtual assessment and check if your child qualifies for the competition, simply submit a screenshot of your child's Activity Summary along with proof of purchase to wccc@languageleapsolutions.com.



WORD CHECK CHALLENGE COMPETITION CHAMPIONSHIP VIRTUAL ASSESSMENTS

Virtual Assessment Structure:

- The virtual assessment series will be conducted annually from March to June to select country representatives for the Word Check Challenge Competition Championship.
- Each participant will be given ample time (10–15 minutes) in a private and focused setting to ensure smooth flow throughout the assessment.
- A facilitator will provide an introduction and address any questions about the application or assessment format before beginning.
- The facilitator will start the timed and recorded virtual assessment.
- Participants will complete the assessment within the designated time.
- Upon completion, the application will automatically calculate and record each participant's score.
- After finishing the assessment, participants will be instructed to sign off.



Technology Considerations:

Application Features:

- The offline application is capable of verifying and handling individual assessments.
- It automatically stores or securely transmits participant scores for later analysis.

Technical Backup:

Virtual assessments will be rescheduled in the event of an unstable internet connection or technical malfunctions.

Data Management:

A system is in place to collect and store assessment data from each participant, either digitally or manually, ensuring accuracy.

Practice Runs:

Practice assessment sessions will be held at the start to identify and resolve any potential issues.

Communication:

The assessment schedule and expectations will be clearly communicated to all parents, guardians, and participants in advance.





Threshold Determination:

- The minimum score (threshold) required for contestants to advance to the next stage will be determined based on the highest score achieved.
- Factors such as test difficulty and the desired level of competition will be taken into account for all participants..

Standardised Environment:

- A stable internet connection is required to facilitate the virtual assessment process.
- Consistent lighting and noise levels will be maintained across all assessments to ensure fairness for each contestant.
- The 160 qualified contestants will be organized into smaller groups of 16.
- Each group will be assigned a designated assessment time slot within the available timeframe.
- A pre-set schedule will be used to coordinate group allocations and avoid scheduling conflicts.



Solo Mode

Partner Mode

Activity Summary

Change Language

English

About us



Youtube Channel

Assessment Software:

- The offline version of the Word Check Challenge app is available on both Google Play and the Apple App Store and will be pre-installed on all assessment laptops..
- The Word Check Challenge app is designed to be user-friendly and accessible for students aged 5 and above.

Assessment Stations:

- The Word Check Challenge Competition Championship will feature multiple assessment rounds, facilitated with an eight-laptop station setup.
- Each contestant will have sufficient space and privacy at their station to focus fully on the assessment.

Assessment Flow (Every 5 Minutes):

- Contestants will be grouped into sets of 16 through a balloting process.
- Each group will be directed to their designated assessment stations, where each contestant will assigned a laptop for the challenge.
- A facilitator will provide a brief overview of the rules and regulations governing the assessment.
- The facilitator will ensure that the Word Check Challenge application on each laptop is refreshed and ready for the competition.
- Contestants will complete the assessment within the allotted time of 3 minutes.
- Upon completion, the Word Check Challenge application will automatically calculate each contestant's score.



- Once the time limit expires, contestants must step away from their laptops to allow the facilitator to verify and announce scores.
- Contestants will then be directed to exit the assessment station, making way for the next group or stage of the competition.

Outcome Analysis:

- The assessment data collected will be thoroughly analysed to determine the number of contestants who met the qualification threshold for the next stage.
- Detailed reports outlining individual contestant scores and overall performance trends will be prepared following each assessment.
- Contestants with the highest percentage scores will advance to the next stage of the Word Check Challenge Competition Championship.

WORD CHECK CHALLENGE COMPETITION QUARTER-FINAL STAGE

Assessment Session One:

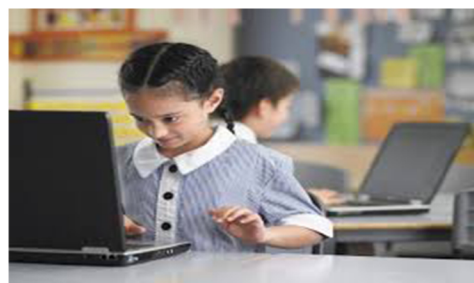
- Contestants: 160
- Group Size: 16
- Total Groups: 10
- Assessment Duration per Group: 5 minutes
- WCC Difficulty Level: Advanced (6 letters)

Assessment Time:

- Assessment Duration: 5 minutes/group
- Assessment Time: 240 minutes (4 hours)

Assessment Session Two:

- Contestants: 80
- Group Size: 16
- Total Groups: 5
- Assessment Duration per Group: 5 minutes
- WCC Difficulty Level: Normal (8 letters)





For the Eliminated Quarter-Finalists:

A prize package including souvenirs and an official certificate of participation will be presented.

WORD CHECK CHALLENGE COMPETITION CHAMPIONSHIP SEMI-FINAL STAGE :

Assessment Session One:

- Contestants: 48
- Group Size: 16
- Total Groups: 3
- Assessment Duration per Group: 5 minutes
- WCC Difficulty Level: Advanced (10 letters)



Assessment Session Two:

- Contestants: 24
- Group Size: 16
- Total Groups: 3
- Assessment Duration per Group: 5 minutes
- WCC Difficulty Level: Advanced (10 letters)



WORD CHECK CHALLENGE COMPETITION CHAMPIONSHIP GRAND FINAL STAGE

Assessment Session One:

- Contestants: 12
- Group Size: 12
- Total Groups: 1
- Assessment Duration per Group: 5 minutes
- WCC Difficulty Level: Advanced (8 letters)

Assessment Session Two:

- Contestants: 6
- Group Size: 6
- Total Groups: 3
- Assessment Duration per Group: 5 minutes
- WCC Difficulty Level: Advanced (7 letters)





Assessment Session Three:

- Contestants: 4
- Group Size: 4
- Total Groups: 1
- Assessment Duration per Group: 5 minutes
- WCC Difficulty Level: Normal (7 letters)



Prize package including souvenirs and an official certificate of participation

- 4th place - £500
- 3rd place - £500
- 2nd place - £1000

For the champion (1st place):

- £2,000 cash prize.
- Commemorative medal
- Official certificate of participation
- Exclusive souvenirs/products

For the champion's school:

- Official championship trophy of the Word Check Challenge Competition.
- Certificate of recognition



Languageleap Solutions Ltd — Where words lead to success.



For Further information, please contact us at wccc@languageleapsolutions.com.